



General Lender Account Replicator – User Guide

Software Documentation

This document is the software documentation for the General Ledger Account Replicator.

Commercial in Confidence

Disclaimer

Provida Pty Ltd ACN 086814084 (Provida) has exercised care to avoid errors but provides no warranty that this document is error or omission free. It is intended for use in relation to the General Ledger Account Replicator module and no representation or warranty is made or given as to its suitability for any other purpose.

Document authorisation

Project sponsor: Pranesh Ravindra

Document Version: **1.0**

Division: ACCPAC

Signature: _____

Date: _____

Contents

1. Introducing The GL Account Replicator Module	4
2. Program Installation	5
2.1 Installation Requirement	5
2.2 Installation Steps	5
2.3 Activation Process	6
2.4 Tables	6
3. Setup Module Options	7
3.1 Option Setup	7
4. GL Account Replicator	8
4.1 Export To Companies	8
4.2 Export Accounts Selection	8
4.3 Export Accounts Preview	9
4.4 Export Accounts	9
4.5 Export Segments Selection	10
4.6 Export Segments Preview	11
4.7 Export Segments	11

1. Introducing The GL Account Replicator Module

The GL Account Replicator module provides functionality to export both general ledger accounts and segments across Accpac companies. The module provides full previewing and logging functionality.

Technical Features:

- Same look and feel as ACCPAC.
- Uses ACCPAC Lanpaks.
- Uses ACCPAC security.
- Tight Integration with the Accpac general ledger.
- Fully developed using the ACCPAC SDK.

Functional Features:

- Exporting of GL accounts and segments across Accpac companies.
- Previewing functionality.
- Export logging functionality.

2. Program Installation

2.1 Installation Requirement

1. SQL server login details entered in the options screen.
2. Accpac login details entered in the options screen. The account details must be activated in each account used in the GL export.
3. The Accpac general ledger module must be activated in each company used in the GL export.

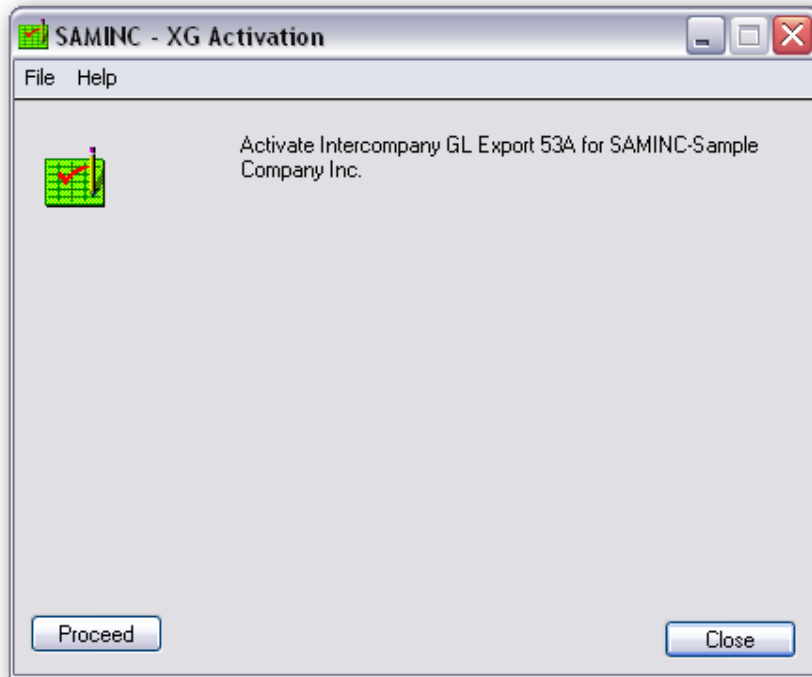
2.2 Installation Steps

1. To install the GL Replicator module copy the folder "XG53A" to the Accpac program folder. The Location of the Accpac folder will depend where the Accpac System Manager is installed. This is usually c:\program files\Accpac.
2. The XG54A Directory structure is shown in the table below.

File Name	Description
AccpacXG0000.ocx	Initialisation Control
AccpacXG1000.ocx	Options Control
AccpacXG2000.ocx	GL Replicator Control
Reg.bat	Register Controls
roto.dat	Roto File
UnReg.bat	Unregister Controls
XG.INI	Module Settings
XG.rsc	Module Security
XGACCPRV.DLL	Account Preview View
XGECMPD.DLL	Company Detail View
XGECMPH.DLL	Company Header View
XGEXPCMP.DLL	Export Companies View
XGGLACCD.DLL	Account Detail View
XGGLSEGD.DLL	Segment Detail View
XGINIT.dll	Initialisation View
XGLOG.DLL	Log View
XGOPT.DLL	Options View
XGRPT.ini	Report Settings
XGSEGPRV.DLL	Segment Preview View
ENG\AccpacXG0000ENG.dll	English Language Resource
ENG\AccpacXG1000ENG.dll	English Language Resource
ENG\AccpacXG2000ENG.dll	English Language Resource
ENG\DEP.DAT	English Language Resource
ENG\grp.dat	Dependency File
ENG\tmpengdir.txt	Group File
ENG\xg53aeng.dll	English Language Resource
ENG\XG53AENGClient.dll	English Language Resource
ENG\XGACCPRV.rpt	Account Export Preview Report
ENG\XGLOG_ACCT.rpt	Account Export Log Report
ENG\XGLOG_SEG.rpt	Segment Export Log Report
ENG\XGSEGPRV.rpt	Segment Export Preview Report

2.3 Activation Process

1. Log in to Accpac program.
2. Select 'Data Activation' from Administrative Services.
3. Select 'XG 53a' to activate the module.



2.4 Tables

The following tables will be created during the activation process.

Table Name	Description
XGOPT	Options
XGLOG	Log
XGGLSEGD	Segment Detail
XGGLACCD	Account Detail
XGECMPH	Export Company Header
XGECMPD	Export Company Detail
XGACPRV	Export Account Preview
XGSEGPRV	Export Segment Preview

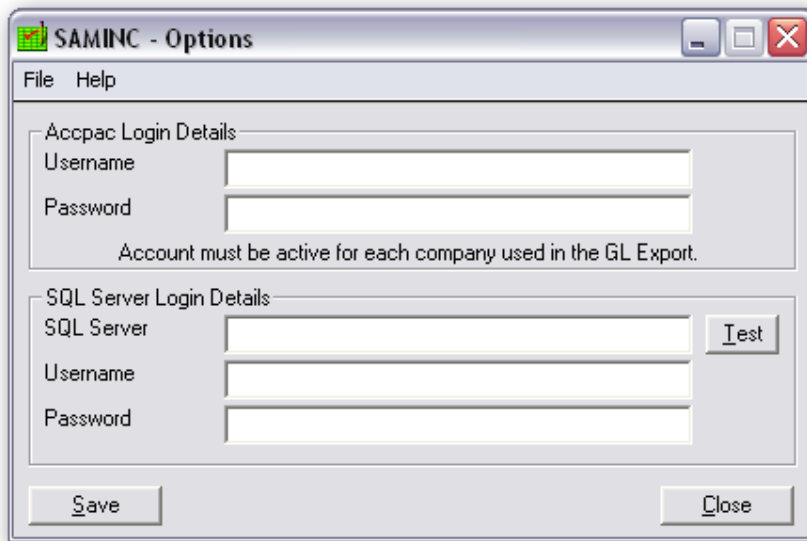
3. Setup Module Options

3.1 Option Setup

The option screen needs to be completed before the module can be used.

Accpac account details need to be entered. This account must be active in each company used in the GL module.

The SQL server login details need to be entered and saved. Check that these are correct by using the test function.



The screenshot shows a Windows-style dialog box titled "SAMINC - Options". It has a menu bar with "File" and "Help". The dialog is divided into two main sections. The first section, "Accpac Login Details", contains two text input fields for "Username" and "Password", with a note below them stating "Account must be active for each company used in the GL Export." The second section, "SQL Server Login Details", contains three text input fields for "SQL Server", "Username", and "Password", along with a "Test" button. At the bottom of the dialog are two buttons: "Save" and "Close".

4. GL Account Replicator

The GL Replicator Screen provides the functionality to export General Ledger Segments and Accounts to other Accpac companies.

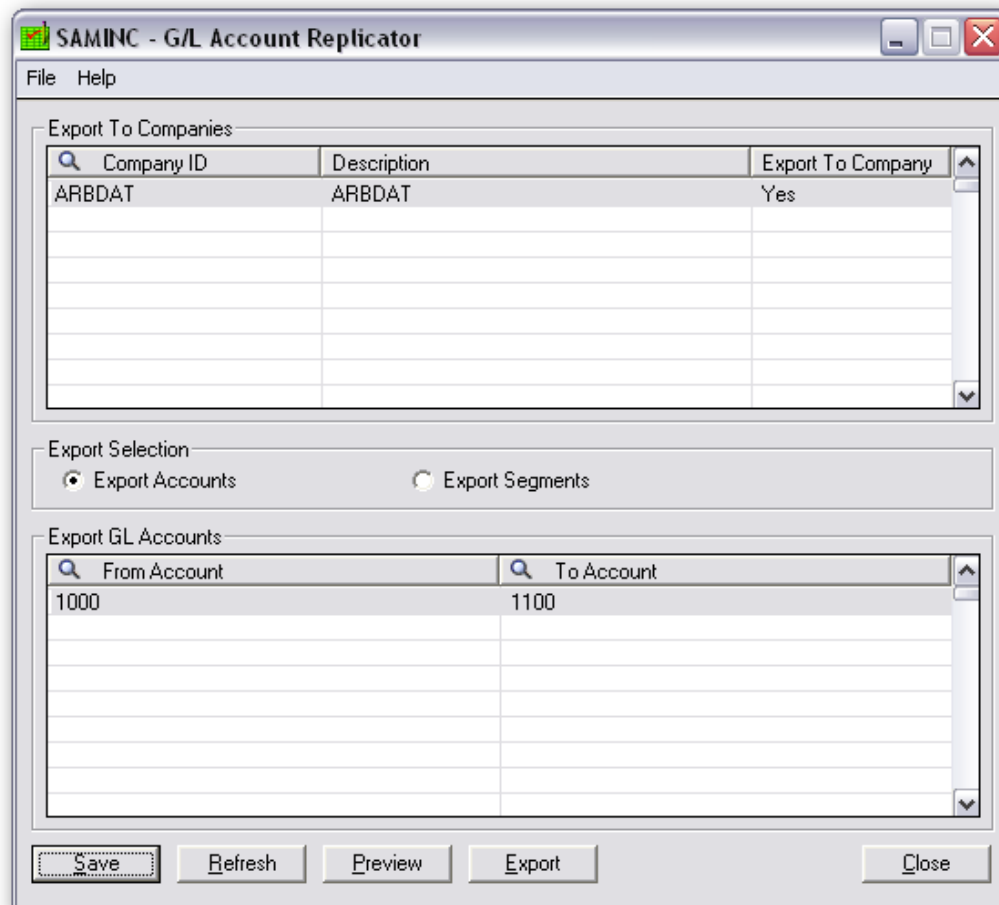
4.1 Export To Companies

Enter the companies that you would like to export to and select YES in the export to company field. Companies that are marked as No will be excluded from the export.

4.2 Export Accounts Selection

When the export account option is selected you will be presented with a window to select the from and to ranges of the Accounts to be exported.

Note that Accpac will not allow an account to be exported if both the segment and segment codes are not first setup in the Accpac company you are exporting to.



SAMINC - G/L Account Replicator

File Help

Export To Companies

Company ID	Description	Export To Company
ARBDAT	ARBDAT	Yes

Export Selection

Export Accounts Export Segments

Export GL Accounts

From Account	To Account
1000	1100

Save Refresh Preview Export Close

User Guide – General Ledger Account Replicator

4.3 Export Accounts Preview

When you have finished entering the account selection click save. This will enable the Preview function. Click this button to display a preview report.

Sample Company Inc.

GL Account Export Preview

Export To Companies

ID	Description	Export
ARB DAT	ARB DAT	Yes

Account Selection

From Account	To Account
1000	1100

Account ID	Account Description	Account Status
1000	Petty cash	Active
1020	Bank account, operating	Active
1021	Bank account, American Express	Active
1022	Bank account, VISA	Active
1023	Bank account, Mastercard	Active
1025	CCB Visa	Active
1030	Bank account, payroll	Active
1045	SEATAC Visa	Active
1100	Accts receivable, intercompany	Active

4.4 Export Accounts

When you have verified the account selection is correct click save to enable the export function. Then click export. A message will then be displayed showing the number of accounts exported followed by a log report displaying the status of each account export.

Sample Company Inc.

GL Replicator - Account Export Log

Export To Companies

ID	Description	Export
CEADAT	CEADAT	Yes

Account Selection

From Account	To Account
1000	1330

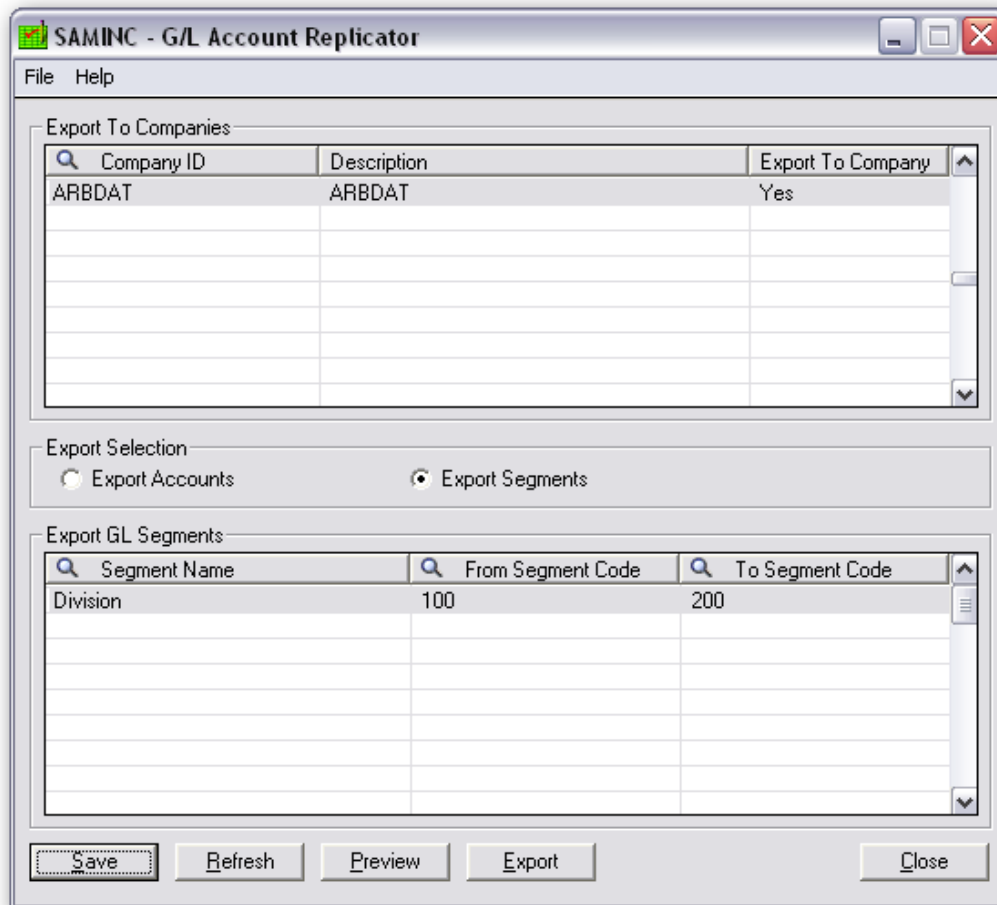
Message	Account	Exported
CEADAT	CEADAT	
Login Accpac session successful.		
Invalid input. Account structure code ACC not defined in Account Structures window.	1000	NO
Invalid input. Account structure code ACC not defined in Account Structures window.	1020	NO
Invalid input. Account structure code ACC not defined in Account Structures window.	1021	NO
Invalid input. Account structure code ACC not defined in Account Structures window.	1022	NO
Invalid input. Account structure code ACC not defined in Account Structures window.	1023	NO
Invalid input. Account structure code ACC not defined in Account Structures window.	1025	NO
Invalid input. Account structure code ACC not defined in Account Structures window.	1030	NO
Invalid input. Account structure code ACC not defined in Account Structures window.	1045	NO

User Guide – General Ledger Account Replicator

4.5 Export Segments Selection

When the export segment option is selected you will be presented with a window to first select the segment name and then the from segment code and to segment code ranges.

Note that the Segment must first be manually setup inside each Accpac company before segment codes can be exported to the company.



The screenshot shows the 'SAMINC - G/L Account Replicator' application window. It features a menu bar with 'File' and 'Help'. The main interface is divided into three sections:

- Export To Companies:** A table with columns 'Company ID', 'Description', and 'Export To Company'. The first row contains 'ARB DAT', 'ARB DAT', and 'Yes'.
- Export Selection:** Two radio buttons: 'Export Accounts' (unselected) and 'Export Segments' (selected).
- Export GL Segments:** A table with columns 'Segment Name', 'From Segment Code', and 'To Segment Code'. The first row contains 'Division', '100', and '200'.

At the bottom of the window, there are five buttons: 'Save', 'Refresh', 'Preview', 'Export', and 'Close'.

User Guide – General Ledger Account Replicator

4.6 Export Segments Preview

When you have finished entering the segment selection click save. This will enable the Preview function. Click this button to display the export segment preview report.

Sample Company Inc.

GL Segment Export Preview

Export To Companies

ID	Description	Export
ARBDAT	ARBDAT	Yes

Segment Selection

From Segment	To Segment
100	200

Segment Value	Segment Description
100	Commercial
200	Retail
20	Southern

4.7 Export Segments

When you have finished verifying that the segment selection is correct click save. This will enable the Export function. Click this button to display the export segment preview report. A message will be displayed showing the number of segment codes exported followed by a log report displaying the status of each segment export.

Sample Company Inc.

GL Replicator - Segment Export Log

Export To Companies

ID	Description	Export
CEADAT	CEADAT	Yes

Segment Selection

From Segment	To Segment
100	200

Message	Segment	Exported
CEADAT	CEADAT	
Login Accpac session successful.		
Invalid input. Segment Code '100' value is not the correct length of 2.	100	NO
Invalid input. Segment Code '200' value is not the correct length of 2.	200	NO
Segment is already existing.	20	NO