

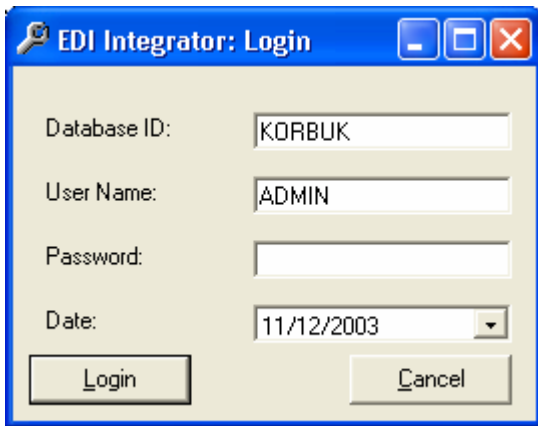


## Feature Summary and Screenshots

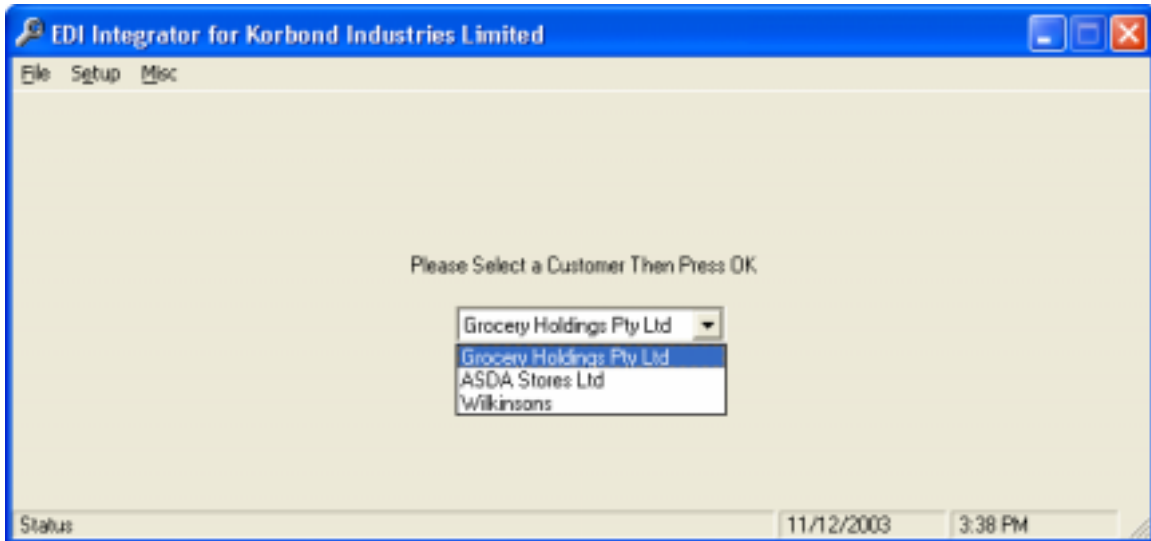
EDI Integrator is an ACCPAC Advantage Series add-on module that extracts sales order files from almost any EDI VAN and uploads the orders in ACCPAC Order Entry. Some existing formats are already supported (e.g. Walmart and ASDA) and others can be added as required.

There are a number of other features that are outlined in the following pages.

### 1. Uses ACCPAC Security:



### 2. Allows for Multiple Clients:



## Visionetix EDI Integrator for ACCPAC



### 3. Main Screen shows three major functions:

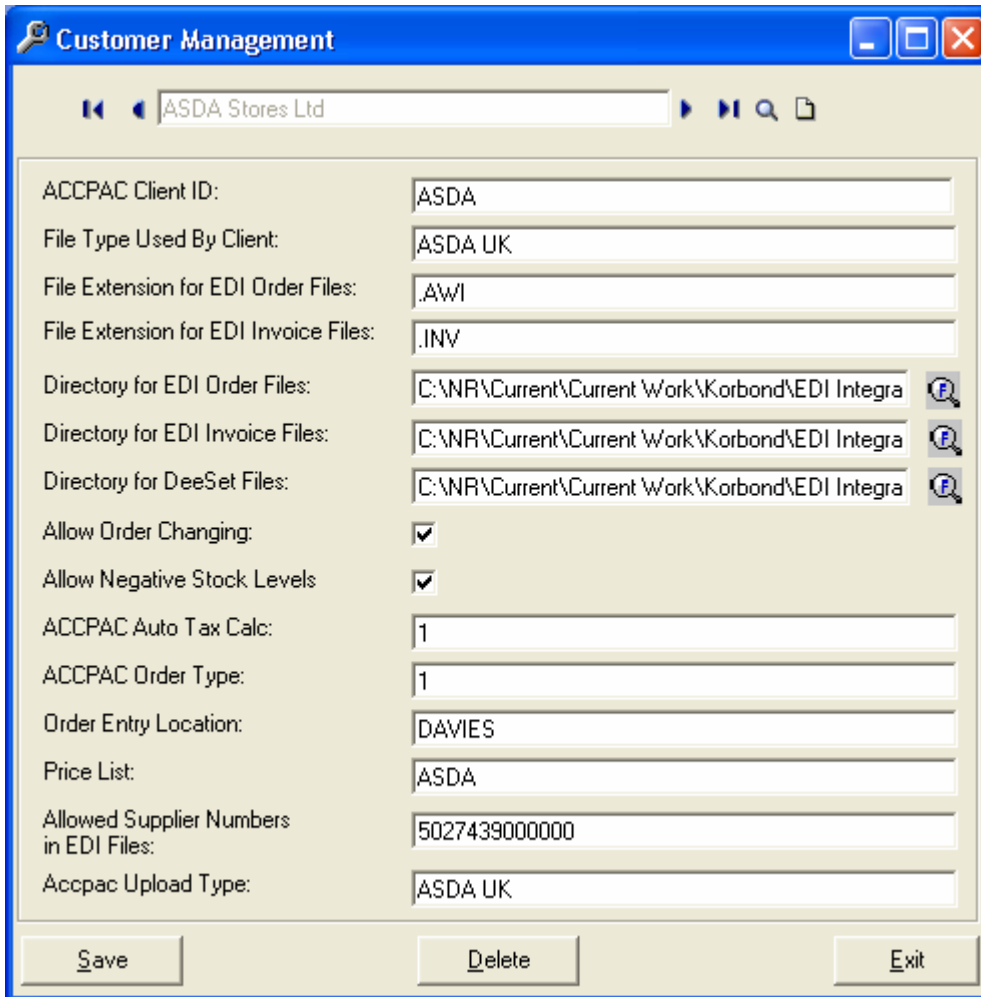
- (1) Send Orders from EDI to ACCPAC
- (2) Send Invoices from ACCPAC to EDI
- (3) Send Proof of Delivery Files (ASDA Only)



### 4. Setup is Dynamic:



5. Customers can be added/modified/deleted:

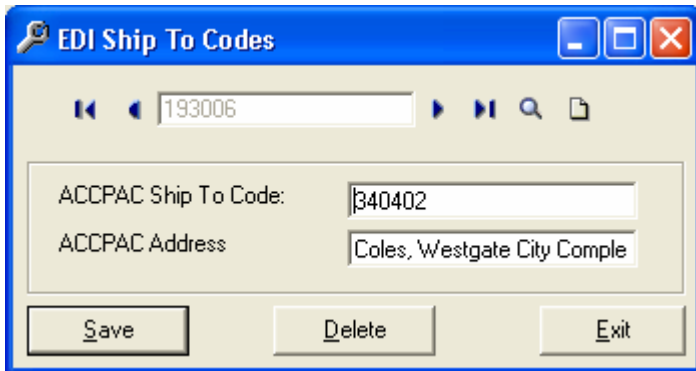


The screenshot shows a 'Customer Management' window with a search bar containing 'ASDA Stores Ltd'. The window contains the following fields and options:

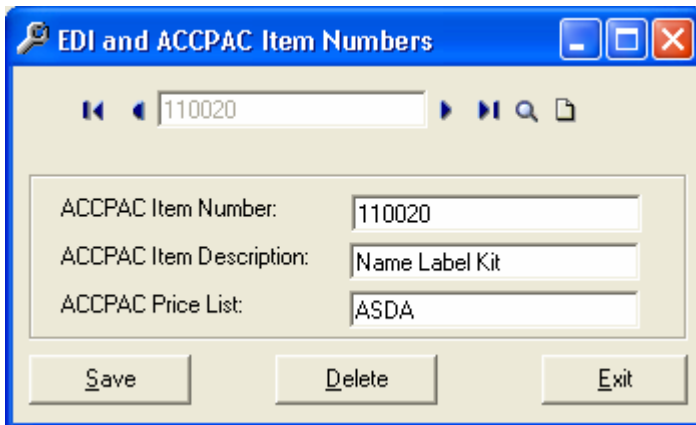
ACCPAC Client ID:	ASDA
File Type Used By Client:	ASDA UK
File Extension for EDI Order Files:	.AWI
File Extension for EDI Invoice Files:	.INV
Directory for EDI Order Files:	C:\NR\Current\Current Work\Korbond\EDI Integra
Directory for EDI Invoice Files:	C:\NR\Current\Current Work\Korbond\EDI Integra
Directory for DeeSet Files:	C:\NR\Current\Current Work\Korbond\EDI Integra
Allow Order Changing:	<input checked="" type="checkbox"/>
Allow Negative Stock Levels:	<input checked="" type="checkbox"/>
ACCPAC Auto Tax Calc:	1
ACCPAC Order Type:	1
Order Entry Location:	DAVIES
Price List:	ASDA
Allowed Supplier Numbers in EDI Files:	5027439000000
Accpac Upload Type:	ASDA UK

Buttons at the bottom: Save, Delete, Exit

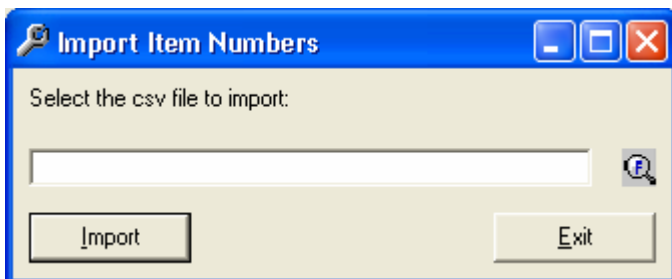
6. Ship to codes can be mapped:



7. Item Numbers can be mapped:

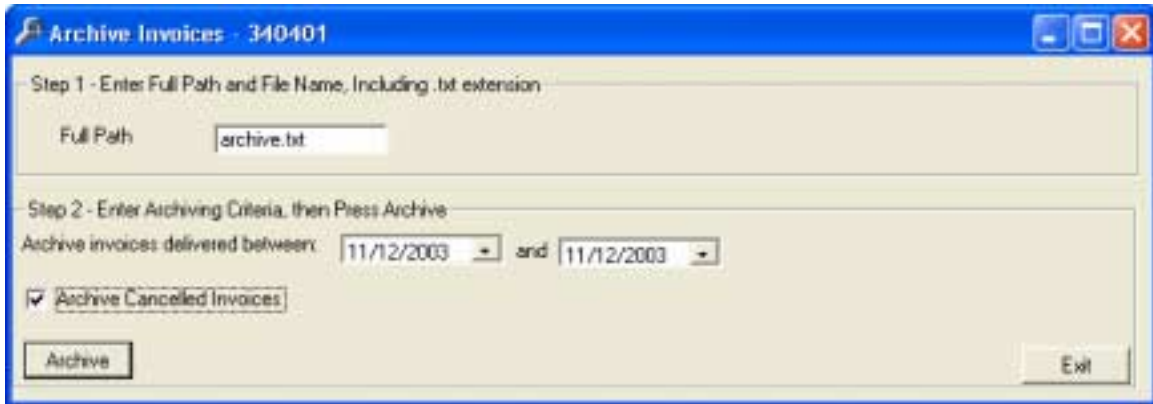


8. Item number mappings can be imported on bulk:

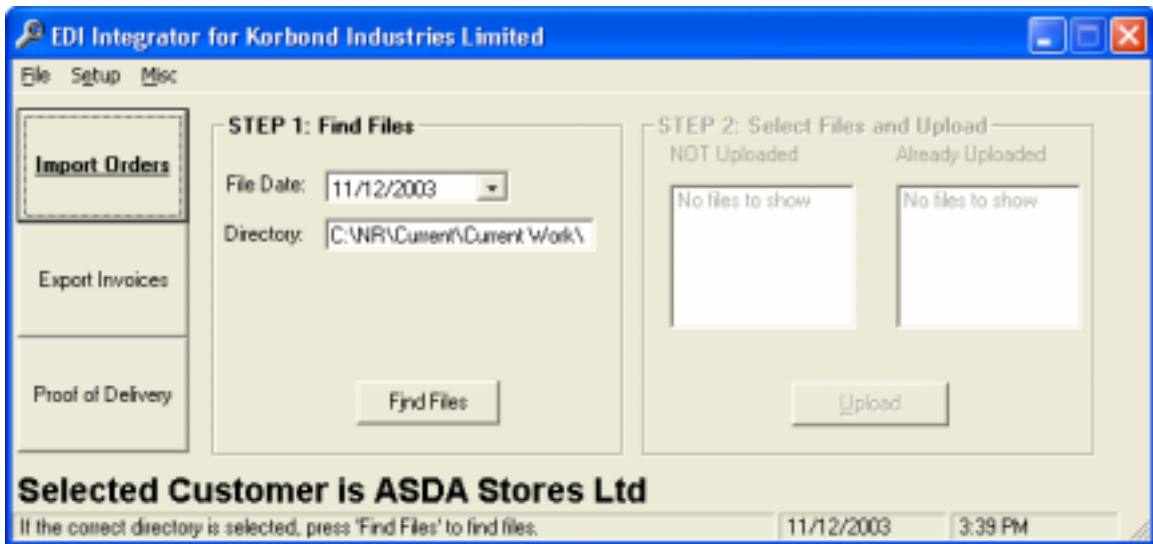




9. Orders can be archived:

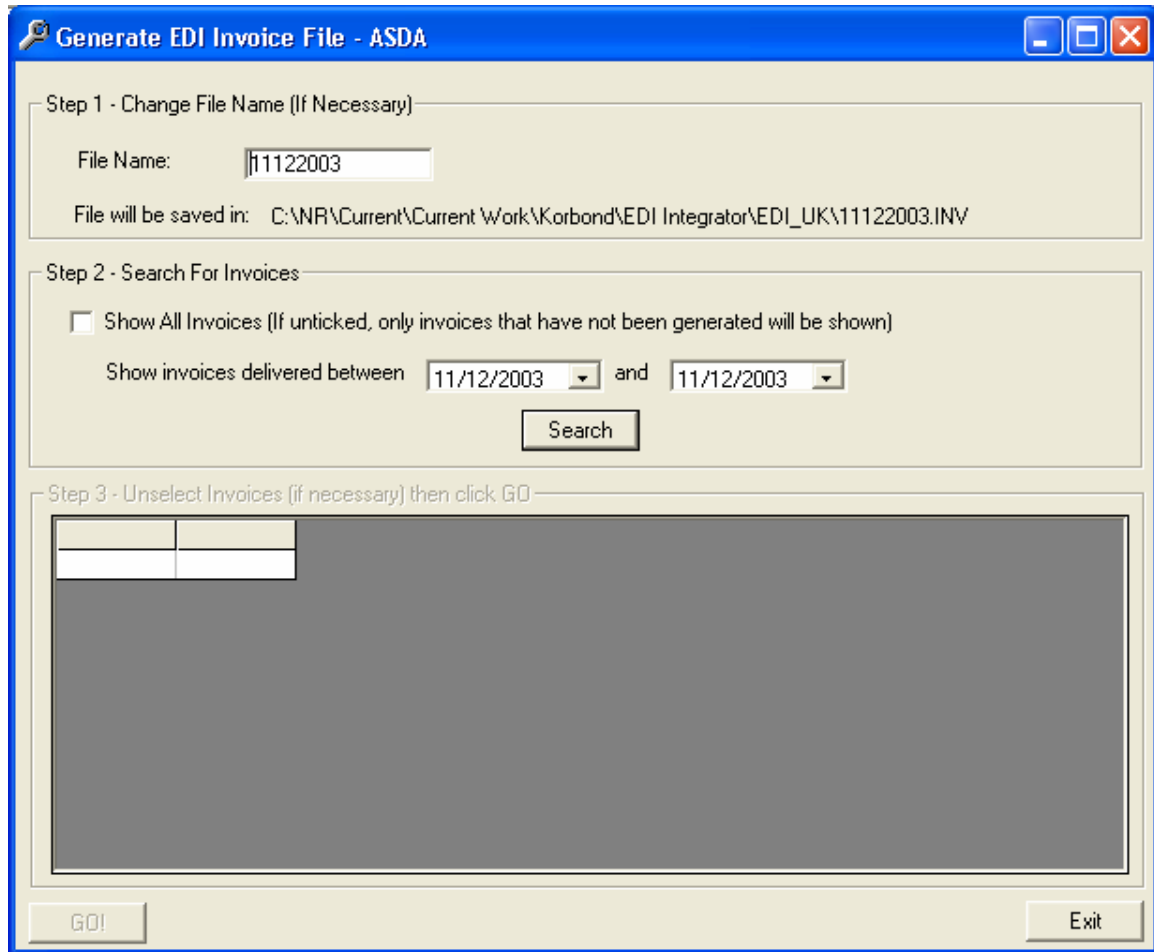


10. Main Function (1) – Sending Orders from EDI to ACCPAC:





11. Main Function (2) – Sending Invoices from ACCPAC to EDI:





12. Generate Proof of Delivery File

